

DSC[®]

Works when it matters most.



EUROPE, MIDDLE EAST & AFRICA EDITION

CATALOG 2009/10



 THE POWER OF SPEED

ALEXOR

Introducing Alexor, the Great Protector.

The 2-Way Wireless Panel and "virtual" brain of DSC's 2-Way Wireless Security Suite, Alexor provides fully supervised wireless communication to DSC's 2-Way and 1-Way 433 MHz wireless peripherals -- keypads, sirens, detectors and wireless keys, as well as GSM and IP communications.

Keypads

2-Way Wireless
Wire-Free Keypad
WT5500

(Page 1)



Wireless Keys

2-Way Wireless Key
WT4989

(Page 20)



Communicators

Internet and GSM/
GRPS Dual-Path Alarm
Communicator

TL265GS

(Page 36)



GSM/GPRS Wireless
Alarm Communicator

GS2065

(Page 36)



Sirens

2-Way Wireless
Indoor Siren
WT4901

(Page 22)



2-Way Wireless
Outdoor Siren
WT4911

(Page 22)



Detectors

Wireless
CO Detector
WS4913

(Page 22)



Wireless
Flood Detector
WS4985

(Page 23)





CONTENTS

PANELS, KEYPADS & MODULES

- 1** Wireless
- 2-9** PowerSeries
- 10** Integration
- 11** Audio Verification
- 12** Fire Panels
- 13-17** MAXSYS[®]

SENSORS & ACCESSORIES

- 20-25** Wireless
- 26-27** Addressable
- 28-29** Motion Detectors
- 30-33** LC Series
- 34** Glassbreak Detectors
- 35** Smoke Detectors

COMMUNICATIONS

- 36-38** Transmitters
- 39-40** Sur-Gard[®]

MISCELLANEOUS

- 18-19** Software Solutions
- 41** Services & Support



Compatibility

DSC products are designed to work with existing or future products.

Durability

DSC products are designed to work, last and withstand extreme situations.

Upgradeable

DSC products allow you to expand and enhance systems with no replacement necessary.

Reliability

DSC products go beyond industry-required testing to ensure reliability and product life.

Flexibility

DSC products allow you to build a system that works for you with over 1000 configurable items.

Quality

DSC is committed to Six Sigma's utilization of consistent and predictable processes to improve what the customer sees and feels.

Wireless

ALEXOR 2-Way Wireless Panel PC9155

- 32 wireless zones, 16 wireless keys (without using a zone slot)
- Wireless quick enroll
- Template programming
- 16 user codes, 1 master code and 1 maintenance code
- Account code error checking (patent pending)
- Alternate communications via GSM/GPRS and IP
- Onboard siren at 85dB
- 2 Input/Output terminals
- 200mA Aux Output
- 500 event buffer
- Wall and case tamper
- 24Hr Battery backup
- Powered by internal or external transformer

Approval Listings: FCC/IC, UL/ULC, CE



2-Way Wireless Wire-Free Keypad WT5500

- 2x16 full message display
- Intuitive clock programming
- Multiple door chime
- Ambient light sensor
- Display and keymat backlighting
- Outdoor temperature display
- Wall and Deskstand* mount
- † Proximity Tag PT4 Arm/Disarm (WT5500P Only)
- Installer's programming
- Multi-Language support
- 5 programmable function keys
- 3 one-touch emergency keys
- Tamper switch
- Nominal battery life - 3 years
- Compatible with Alexor

* WT5500D or WT5500DMK

Approval Listings: FCC/IC, UL/ULC, CE



Self-Contained Wireless Alarm System PowerSeries 9045

- Smallest footprint of any self-contained wireless alarm system currently available
- Aesthetically pleasing design
- Supports 32 wireless zones and 16 wireless keys (without using a zone slot)
- Large 2 x 16 display
- Full 32-character programmable phrases
- Enlarged keypad buttons
- 5 programmable function keys
- Intuitive clock programming
- Input/Output terminals can be programmed to operate as zone inputs or programmable outputs
- Individual FAP keys
- Wireless quick enroll
- Template programming
- 17 user codes
- 128 event buffer
- 1 partition

Approval Listings: European CE Directives (EMC, R&TTE, LVD), FCC/IC, UL/ULC



Some products are not available in all countries. Contact your local distributor for details.

PowerSeries

PowerSeries Control Panel PC585

- 4 on-board zones
- 32 wireless zones
- 2 PGM outputs
- Connect up to 8 supervised keypads with keypad zones
- 1 partition
- 128-event buffer
- 32 user codes

Approval Listings: European CE Directives (EMC, R&TTE, LVD), INCERT (Belgium), FCC/IC



PowerSeries Control Panel PC1616

- 6 on-board zones
- Expandable to 16 hardwired zones
- Expandable to 32 wireless zones
- 2 PGM outputs: expandable to 14 (PC5204, PC5208)
- Template programming
- Connect up to 8 supervised keypads with keypad zones
- 2 partitions
- 500-event buffer
- 48 user codes

Approval Listings: European CE Directives (EMC, R&TTE, LVD), INCERT (Belgium), NCP (Holland), NFA2P Type 2 (France), IMQ (Italy) Livello 2, SBSC (Sweden) Larmklass 2, EN50131-1 Grade 2, Class II Environmental, ICASA (South Africa), FCC/IC, UL/ULC



PowerSeries Control Panel PC1832

- 8 on-board zones
- Expandable to 32 hardwired zones
- Expandable to 32 wireless zones
- 2 PGM outputs: expandable to 14 (PC5204, PC5208)
- Template programming
- Connect up to 8 supervised keypads with keypad zones
- 4 partitions
- 500-event buffer
- 72 user codes

Approval Listings: European CE Directives (EMC, R&TTE, LVD), INCERT (Belgium), NCP (Holland), NFA2P Type 2 (France), IMQ (Italy) Livello 2, SBSC (Sweden) Larmklass 2, EN50131-1 Grade 2, Class II Environmental, ICASA (South Africa), FCC/IC, UL/ULC



PowerSeries Control Panel PC1864

- 8 on-board zones
- Expandable to 64 hardwired zones
- Expandable to 32 wireless zones
- 4 PGM outputs: expandable to 14 (PC5204, PC5208)
- Template programming
- Connect up to 8 supervised keypads with keypad zones
- 8 partitions
- 500-event buffer
- 95 user codes

Approval Listings: European CE Directives (EMC, R&TTE, LVD), INCERT (Belgium), NCP (Holland), NFA2P Type 2 (France), IMQ (Italy) Livello 2, SBSC (Sweden) Larmklass 2, EN50131-1 Grade 2, Class II Environmental, ICASA (South Africa), FCC/IC, UL/ULC



Some products are not available in all countries. Contact your local distributor for details.

PowerSeries Control Panel Overview

Feature Comparison Chart

Features	PC585	PC1616	PC1832	PC1864
Number Of On-board Zones	4	6	8	8
Total Zones Supported	32	32	32	64
Keypad Zone Expansion	Yes	Yes	Yes	Yes
Hardwired Zone Expansion	No	Yes	Yes	Yes
Hardwired Zones	-	16 (1 x PC5108)	32 (3 x PC5108)	64 (7 x PC5108)
Wireless Zone Expansion	Yes	Yes	Yes	Yes (32 Wireless)
Addressable Zone Expansion	No	Yes	Yes	Yes (32 Addressable)
Number of Keypads	8	8	8	8
Number of Wireless Receivers	4	4	4	4
On-Board PGM Outputs	PGM 1 = 50 mA PGM 2 = 50mA	PGM 1 = 50 mA PGM 2 = 300mA	PGM 1 = 50 mA PGM 2 = 300mA	PGM 1, 3, 4 = 50 mA PGM 2 = 300mA
Number of Main Panel Low-Current PGM Outputs	2	1	1	3
Number of Main Panel High-Current PGM Outputs	-	1	1	1
PGM Expansion	-	8 x 50 mA (PC5208) 4 x 500 mA (PC5204)	8 x 50 mA (PC5208) 4 x 500 mA (PC5204)	8 x 50 mA (PC5208) 4 x 500 mA (PC5204)
Number of Additional Low-Current PGM Outputs	-	8	8	8
Number of Additional High-Current PGM Outputs	-	4	4	4
Number of Access Codes	32+ Master Code	47+ Master Code	71+ Master Code	94+ Master Code
Number of Partitions	1	2	4	8
Panel Event Buffer	128	500	500	500
Phone Line Supervision	Yes	Yes	Yes	Yes
Siren Supervision	Yes	Yes	Yes	Yes
Bell Output	12 V / 700 mA (cont)	12 V / 700 mA (cont)	12 V / 700 mA (cont)	12 V / 700 mA (cont)
SIA CP-01 Compliant	No	Yes	Yes	Yes
Event-Initiated Personal Paging	Yes	Yes	Yes	Yes
Upload/Download Support	Yes	Yes	Yes	Yes
Direct-Connect (PC Link) Downloading Support	Yes	Yes	Yes	Yes
DLS2002SA End-User Downloading Support	-	Yes	Yes	Yes
Internet Alarm Communications	No	Yes	Yes	Yes
Audio Alarm Verification	No	Yes	Yes	Yes
GSM Alarm Communications	Yes	Yes	Yes	Yes
Battery Required	4 Ah / 7 Ah / 14 Ahr	4 Ah / 7 Ah / 14 Ahr	4 Ah / 7 Ah / 14 Ahr	4 Ah / 7 Ah / 14 Ahr

Some products are not available in all countries. Contact your local distributor for details.

PowerSeries Control Panel Overview

PowerSeries Module Version Compatibility Chart

Modules	PC585	PC1616	PC1832	PC1864
PC5100 Addressable Zone Expander	-	All	All	All
PC5108 8-Hardwire Zone Expander	-	All	All	All
RF5108-433 Wireless Receiver	All	All	All	All
RF5132-433 Wireless Receiver	All	All	All	All
PC5200/PC5204 Power Supply Modules	-	All	All	All
PC5208 Programmable Output Module	-	All	All	All
PC5320 Multiple Wireless Receiver Module	All	All	All	All
PC5400 Printer Interface Module	-	All	All	All
PC5601 Status Module	All	All	All	All
Escort 5580TC Telephone Interface & Automation Control Module	-	All	All	All
PK5590CL PowerSeries Touchscreen Interface Module	All	All	All	All
PK5500/RFK5500 64-Zone LCD Full-Message Keypad	All	All	All	All
PK5501/RFK5501 64-Zone LCD Picture ICON Keypad	All	All	All	All
PK5516/RFK5516 16-Zone LED Keypad	All	All	All	All
PK5508/RFK5508 8-Zone LED Keypad	All	All	All	All
LED5511Z 8-Zone LED Keypad	All	All	All	All
LCD5511 64-Zone ICON LCD Keypad	All	All	All	All
PC1555RKZ 8-Zone LED Keypad	All	All	All	All
T-Link TL150 Residential IP Alarm Communicator	All	All	All	All
T-Link TL250 Internet Alarm Communicator	-	All	All	All
T-Link TL300 Universal IP Alarm Communicator	All	All	All	All
GS3055-IGW GSM/GPRS Universal Wireless Alarm Communicator	All	All	All	All
GS2060 GSM/GPRS Wireless Alarm Communicator	-	All	All	All
TL260GS Internet and GMS/GPRS Dual-path Alarm Communicator	-	All	All	All
IT-100/IT-120 Integration Modules	All	All	All	All
PC5950 Audio Verification Module	All	All	All	All
PC5961 Stand Alone Audio Station	All	All	All	All
PC5962 Contoured Audio Station	All	All	All	All
PC5964 Large Speaker Station	All	All	All	All

Some products are not available in all countries. Contact your local distributor for details.

PowerSeries 64-Zone LCD Full-Message Keypad PK5500 RFK5500 with built-in wireless receiver

- 8 language support
- Global partition status
- Full 32-character programmable phrases
- Modern, slim-line landscape keypad
- Enlarged keypad buttons
- 5 programmable function keys
- Intuitive clock programming*
- Input/Output terminal can be programmed to operate as a zone input, programmable output or as a low temperature sensor
- 3 one-touch emergency keys
- Multiple door chime per zone
- Adjustable backlight and keypad buzzer
- Wire channel
- Dual wall-mount and front cover tamper
- Easy-to-install mounting hinge
- Surface or single-gang box mount
- New AC status ICON
- RFK5500-433 and NEW RFK5500-868 include all of the same features and supports 32 wireless zones and 16 wireless keys

Approval Listings: European CE Directives (EMC), INCERT (Belgium), NCP (Holland), NFA2P Type 2 (France), IMQ (Italy) Livello 2, SBSC (Sweden) Larmklass 2, EN50131-1 Grade 2**, Class II Environmental, FCC/IC, UL/ULC

* Feature only available with new PowerSeries control panels (PC1616, PC1832 and PC1864)

** Available on PK and RFK-868 version keypads



PowerSeries 64-Zone LCD Picture Icon Keypad PK5501 RFK5501 with built-in wireless receiver

- Modern, slim-line landscape keypad
- Enlarged keypad buttons
- 5 programmable function keys
- Input/Output terminal can be programmed to operate as a zone input, programmable output or as a low temperature sensor
- 3 one-touch emergency keys
- Multiple door chime per zone
- Adjustable backlight and keypad buzzer
- Wire channel
- Dual wall-mount and front cover tamper
- Easy-to-install mounting hinge
- Surface or single-gang box mount
- New AC status ICON
- RFK5501-433 and NEW RFK5501-868 include all of the same features and supports 32 wireless zones and 16 wireless keys

Approval Listings: European CE Directives (EMC), INCERT (Belgium), IMQ (Italy) Livello 2, SBSC (Sweden) Larmklass 2, EN50131-1 Grade 2**, Class II Environmental, FCC/IC, UL/ULC

** Available on PK and RFK-868 version keypads



PowerSeries 16-Zone LED Keypad PK5516 RFK5516 with built-in wireless receiver

- Modern, slim-line landscape keypad
- Enlarged keypad buttons
- 5 programmable function keys
- Input/Output terminal can be programmed to operate as a zone input, programmable output or as a low temperature sensor
- Individual FAP keys
- Multiple door chime per zone
- Adjustable backlight and keypad buzzer
- Wire channel
- Dual wall-mount and front cover tamper
- Easy-to-install mounting hinge
- Surface or single-gang box mount
- New AC status ICON
- RFK5516 includes all of the same features and supports 32 wireless zones and 16 wireless keys

Approval Listings: European CE Directives (EMC), INCERT (Belgium), IMQ (Italy) Livello 2, SBSC (Sweden) Larmklass 2, EN50131-1 Grade 2**, Class II Environmental, FCC/IC, UL/ULC

** Available on PK version keypads



Some products are not available in all countries. Contact your local distributor for details.

PowerSeries 8-Zone LED Keypad PK5508 RFK5508 with built-in wireless receiver

- Modern, slim-line landscape keypad
- Enlarged keypad buttons
- 5 programmable function keys
- Input/Output terminal can be programmed to operate as a zone input, programmable output or as a low temperature sensor
- 3 one-touch emergency keys
- Multiple door chime per zone
- Adjustable backlight and keypad buzzer
- Wire channel
- Dual wall-mount and front cover tamper
- Easy-to-install mounting hinge
- Surface or single-gang box mount
- New AC status ICON
- RFK5508 includes all of the same features and supports 32 wireless zones and 16 wireless keys

Approval Listings: European CE Directives (EMC), INCERT (Belgium), IMQ (Italy) Livello 2, SBSC (Sweden) Larmklass 2, EN50131-1 Grade 2**, Class II Environmental, FCC/IC, UL/ULC

** Available on PK version keypads



PowerSeries 8-Zone LED Keypad LED5511Z

- Modern, slim-line portrait keypad
- Large, backlit buttons on keypad for trouble-free viewing and activation
- 4 programmable function keys
- Dual FAP keys
- Dual tamper support
- Zone input
- Surface or single-gang box mount
- Wire channel

Approval Listings: European CE Directives (EMC), FCC/IC, UL/ULC



PowerSeries 64-Zone Icon LCD Keypad LCD5511

- Modern, slim-line portrait keypad
- Large, backlit buttons on keypad for trouble-free viewing and activation
- Intuitive symbols and backlit display
- Input/Output terminal can be programmed to operate as a zone input, programmable output or as a low temperature sensor
- 4 programmable function keys
- 8 partition support
- Dual FAP keys
- Wire channel
- New AC status ICON

Approval Listings: European CE Directives (EMC), FCC/IC, UL/ULC



PowerSeries Color Touchscreen Security Interface PK5590CL

- Aesthetically pleasing, modern design
- High-contrast, color touchscreen QVGA display
- Prominently displayed FAP (Fire/Auxiliary/Panic) keys
- Intuitive LED indication of security system status
- User help screens
- Available in English and French

Approval Listings: Not CE Listed, FCC/IC



PowerSeries 8-Zone LED Keypad PC1555RKZ

- LED status lights for zones and status functions
- Zone input

Approval Listings: European CE Directives (EMC), FCC/IC, UL/ULC



Some products are not available in all countries. Contact your local distributor for details.

PowerSeries Keypad Overview

PowerSeries Keypad Features

General Features	PK5500*	PK5501*	PK5516*	PK5508*
Display Type	LCD/ALPHA	LCD/FIXED	LED	LED
Zone Support	64	64	16	8
Partition Support	8	8	8	8
Number of Function Keys	5	5	5	5
Dedicated Function Keys	Yes	Yes	Yes	Yes
Dedicated FAP Keys	Yes	Yes	Yes	Yes
Dual FAP Keys	No	No	No	No
Key Size	Large	Large	Large	Large
AC Status LED	Yes	Yes	Yes	Yes
Integrated Low Temperature Sensor	Yes	Yes	Yes	Yes
Zone Input	Yes	Yes	Yes	Yes
PGM Output	Yes	Yes	Yes	Yes
DEOL Zone Supervision	Yes	Yes	Yes	Yes
Intuitive Clock Programming	Yes	No	No	No
Backlighting Adjustment Control	Yes	Yes	Yes	Yes
Buzzer Adjustment Control	Yes	Yes	Yes	Yes
Multiple Chime Per Zone	Yes	Yes	Yes	Yes
Hardware				
Bezel Color	White	White	White	White
Soft/Hard Lens	Hard	Hard	Hard	Hard
Profile	Landscape	Landscape	Landscape	Landscape
* Integrated RF Receiver Models	RFK5500	RFK5501	RFK5516	RFK5508
Buzzer/Backlighting Adjustment Retained After Power Loss	Yes	Yes	Yes	Yes
"Hands Free" Installation Hinge	Yes	Yes	Yes	Yes
Wire Channel	Yes	Yes	Yes	Yes
Single-Gang Box Mount	Yes	Yes	Yes	Yes
Double-Gang Box Mount	Yes	Yes	Yes	Yes
Case Tamper (Dual Tamper Support)	Yes	Yes	Yes	Yes

* RFK versions of these keypads are available with a built-in wireless receiver and support 32 wireless zones and 16 wireless keys

Some products are not available in all countries. Contact your local distributor for details.

PowerSeries

Keypad Overview

PowerSeries Keypad Features Continued

General Features	PK5590CL	LCD5511	LED5511Z
Display Type	Touchscreen	LCD/FIXED	LED
Zone Support	64	64	8
Partition Support	1	8	2
Number of Function Keys	N/A	4	4
Dedicated Function Keys	N/A	No	No
Dedicated FAP Keys	Yes	No	No
Dual FAP Keys	No	Yes	Yes
Key Size	Small	X-Large	X-Large
AC Status LED	No	No	No
Integrated Low Temperature Sensor	No	Yes	No
Zone Input	No	Yes	Yes
PGM Output	No	Yes	No
DEOL Zone Supervision	No	No	No
Intuitive Clock Programming	Yes	No	No
Backlighting Adjustment Control	Yes	No	No
Buzzer Adjustment Control	No	Yes	Yes
Multiple Chime Per Zone	No	Yes	No
Hardware			
Bezel Color	White	White	White
Soft/Hard Lens	Hard	Soft	Soft
Profile	Landscape	Portrait	Portrait
* Integrated RF Receiver Models	N/A	N/A	N/A
Buzzer/Backlighting Adjustment Retained After Power Loss	Yes	No	No
"Hands Free" Installation Hinge	N/A	No	No
Wire Channel	No	Yes	Yes
Single-Gang Box Mount	No	Yes	Yes
Double-Gang Box Mount	No	No	No
Case Tamper (Dual Tamper Support)	No	Yes	Yes

Some products are not available in all countries. Contact your local distributor for details.

PowerSeries Addressable Zone Expander PC5100

- Connect up to 32 addressable detectors (AML)
- Detectors can be home-run, t-tapped or daisy chained
- Easy detector enroll process
- Compatible with PC1616, PC1832 and PC1864 control panels

Approval Listings: European CE Directives (EMC), FCC/IC, UL/ULC



PowerSeries 8-Hardwire Zone Expander PC5108

- Adds 8 hardwire zones
- AUX power, 125 mA (PTC protected)
- Compatible with PC1616, PC1832 and PC1864 control panels

Approval Listings: European CE Directives (EMC), INCERT (Belgium), NCP (Holland), NFA2P Type 2 (France), IMQ (Italy) Livello 2, SBSC (Sweden) Larmklass 2, EN50131-1 Grade 2, Class II Environmental, FCC/IC, UL/ULC



PowerSeries Wireless Receivers RF5132-433 & RF5132-868

- Supports 32 wireless zones, 16 wireless keys
- All wireless detectors are fully supervised for communication integrity
- RF5132-433 is compatible with all PowerSeries control panels
- Available in both 433 MHz and 868 MHz

RF5132-433: Approval Listings: European CE Directives (EMC, R&TTE, LVD), INCERT (Belgium), NCP (Holland), IMQ (Italy) Livello 2, Class II Environmental, ICASA (South Africa), FCC/IC, UL/ULC

RF5132-868: Approval Listings: European CE Directives (EMC, R&TTE, LVD)



PowerSeries Power Supply Modules PC5200 & PC5204

- Provides up to 1 Amp @ 12 VDC
- Fully supervised for AC failure, low battery and AUX failure
- PC5204 adds 4 programmable high current voltage outputs: rated at 1 Amp @ 12 VDC, output #1 can be used as a supervised bell output
- Connect one PC5204 and up to four PC5200 supervised modules on a system
- Compatible with PC1616, PC1832 and PC1864 control panels

PC5200: Approval Listings: European CE Directives (EMC), FCC/IC, UL/ULC

PC5204: Approval Listings: European CE Directives (EMC), INCERT (Belgium), NCP (Holland), NFA2P Type 2 (France), IMQ (Italy) Livello 2, SBSC (Sweden) Larmklass 2, EN50131-1 Grade 2, Class II Environmental, FCC/IC, UL/ULC



PowerSeries Programmable Output Module PC5208

- Provides 8 low current (50 mA) PGM voltage outputs
- Compatible with PC1616, PC1832 and PC1864 control panels

Approval Listings: European CE Directives (EMC), INCERT (Belgium), NCP (Holland), IMQ (Italy) Livello 2, SBSC (Sweden) Larmklass 2, EN50131-1 Grade 2, Class II Environmental, FCC/IC, UL/ULC



Some products are not available in all countries. Contact your local distributor for details.

Integration

PowerSeries Multiple Wireless Receiver Module PC5320

- Can be used to connect up to 4 wireless receivers for increased coverage
- Multi-frequency support for combination of 900/433 MHz receivers
- Compatible with all PowerSeries control panels

Approval Listings: European CE Directives (EMC), INCERT (Belgium), NCP (Holland), FCC/IC, UL/ULC



PowerSeries Printer Interface Module PC5400

- Can be used to support a serial printer
- Compatible with PC1616, PC1832 and PC1864 control panels

Approval Listings: European CE Directives (EMC), INCERT (Belgium), NCP (Holland), FCC/IC, UL/ULC



PowerSeries Telephone Interface & Automation Control Module ESCORT 5580TC

- Turns any touchtone phone into a talking keypad
- Programmable labels: 6 words per label, 240+ word library
- Built-in X-10 interface: supports up to 32 X-10 devices, 16 schedules, 8 modes
- Built-in thermostat support
- Compatible with PC1616, PC1832 and PC1864 control panels

Approval Listings: European CE Directives (EMC, R&TTE, LVD), INCERT (Belgium), NCP (Holland), NFA2P Type 2 (France), FCC/IC, UL/ULC



PowerSeries Status Module PC5601

- Tri-color LED provides security system status at a glance
- Standard single-gang footprint
- Sleek plastic enclosure complements home décor
- Color-coded wiring harness included
- Only supports partition 1
- KEYBUS-compatible with all PowerSeries control panels

Approval Listings: Not CE Listed



PowerSeries Integration Module IT-100

- Compatible with all PowerSeries control panels
- Bi-directional RS-232 interface
- Real-time zone status
- Fully programmable
- 4-wire hook-up to KEYBUS
- Virtual keypad mode
- Thermostat control functionality via a DSC Escort module
- Supported by many integration drivers

Approval Listings: European CE Directives (EMC), FCC/IC



Some products are not available in all countries. Contact your local distributor for details.

Audio Verification

Universal 2-Way VOX Audio Verification Module PC5950

- Supports both 2-way audio VOX and push-to-talk verification
- Supports 4 microphones and 4 speakers
- Silent/Listen-in functionality on hold-up alarms (activates only when an alarm occurs)
- User call-in feature
- KEYBUS direct connect allows all programming to be performed at the system keypad or remotely using DLS2002 software
- KEYBUS compatible with all PowerSeries control panels
- Universal installation compatibility with any control panel using either PGM and/or Bell dry contact outputs

Approval Listings: European CE Directives (EMC, R&TTE), FCC/IC



Stand-Alone Audio Station PC5961

- Equipped with speaker/microphone
- New modern look
- Specifically designed for 2-way voice verification
- 4-wire connection to module
- Surface or single-gang box mount
- Compatible with PC5950 and PC5900 modules

Approval Listings: European CE Directives (EMC), FCC/IC



Contoured Audio Station PC5962

- Equipped with speaker/microphone
- Fits seamlessly to side of PK/RFK series of keypads
- New modern look
- Specifically designed for 2-way voice verification
- 4-wire connection to module
- Compatible with PC5950 and PC5900 modules

Approval Listings: European CE Directives (EMC), FCC/IC



Large Speaker Station PC5964

- Equipped with speaker/microphone
- New modern look
- Specifically designed for 2-way voice verification
- Bell follower functionality (replaces internal sounder on premises. PC5950 only)
- 4-wire connection to module
- Surface or single-gang box mount
- Compatible with PC5950 and PC5900 modules

Approval Listings: European CE Directives (EMC), FCC/IC



Some products are not available in all countries. Contact your local distributor for details.

Fire Panels

Conventional Fire Panel CFD4800

- Available in 2, 4 and 8 zone non-expandable fire panels
- 8 to 24 zone expandable fire panel
- Up to 21 devices per zone
- Gas detector compatible (4 -20mA gas detectors)
- Extinguishing module

Approval Listings: EN54, EN12094-1

Model	Description
CFD4802	2 zone fire control panel
CFD4804	4 zone fire control panel
CFD4808	8 zone fire control panel
CFD4824	8 expandable to 24 zone fire control panel
CFD4001	Repeater panel for CFD series
J400-LCD	Display module
PCJ400BRIDGE	Serial interface module
CFD4808EXT	Extinguisher module with microprocessor control
J400EXP8	8 zone expander module for CFD4824 panels



Addressable Fire Panels AFD2000

- One and two loop control panels and remote repeater display module
- Each loop supports 250 FireClass Digital Loop addressable detectors
- Devices can be mixed and matched in any combination
- Network up to 8 FireClass control panels via the onboard RS485 bus
- FIRECLASS500 Console Software

Approval Listings: EN54

Model	Description
AFD2010	One Loop Addressable Fire Panel
AFD2020	Two Loop Addressable Fire Panel
AFD2001	Repeater Display Module



Some products are not available in all countries. Contact your local distributor for details.

MAXSYS

MAXSYS Control Panel PC4020

- 16 on-board zones
- Expandable up to 128 zones using hardwire, wireless modules and addressable zones
- Supports up to 16 hardwired keypads
- Expandable to 64 zones
- 8 partitions
- 1,500 user codes (4 or 6 digit)
- 3,000-event buffer
- 9 account and 3 phone numbers
- Built-in telephone line and siren supervision
- Auto SIA and Contact ID formats
- Supports GSM and T-Link™ alarm communicators
- Full upload/download support with DLS download software

Approval Listings: European CE Directives (EMC, R&TTE, LVD), INCERT (Belgium), FCC/IC, UL/ULC



MAXSYS Commercial Fire Panel PC4020CF

Includes all the features of the PC4020 Control Panel plus:

- PC4050CR cabinet
- PC4701 module
- Built-in 16 VAC, 110 VAC transformer

Approval Listings: European CE Directives (EMC, R&TTE, LVD), INCERT (Belgium), FCC/IC, UL listed under UL864 8th Edition only



MAXSYS Programmable-Message LCD Keypad LCD4501

- Connect up to 16 keypads
- Large, backlit, 2-line, 32-character display
- Plain-language display of zone status, system status, trouble conditions, event buffer, system instructions, date and time
- Ready, Armed and Trouble LEDs
- 5 programmable function keys
- 4 keypad-activated alarms: Panic, Auxiliary, Fire and Duress
- Backlight boost

Approval Listings: European CE Directives (EMC), INCERT (Belgium), ICASA (South Africa), FCC/IC, UL/ULC



MAXSYS Programmable Fire-Message LCD Keypad LCD4521

- Includes all the features of the LCD4501 keypad
- Red bezel
- Fire function keys
- Silence Trouble, Silence Bells, Fire Reset, Fire Drill and Lamp Test

Approval Listings: European CE Directives (EMC), INCERT (Belgium), FCC/IC, UL listed under UL864 8th Edition only



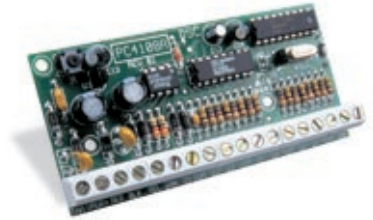
Some products are not available in all countries. Contact your local distributor for details.

MAXSYS 8/16 Hardwire Zone Expanders PC4108A & PC4116

- PC4108A adds 8 hardwire zones
- PC4116 adds 16 hardwire zones
- AUX power rated at 250 mA (PTC protected)

PC4108A: Approval Listings: European CE Directives (EMC), INCERT (Belgium), FCC/IC, UL/ULC

PC4116: Approval Listings: Not CE Listed



MAXSYS Wireless Receiver PC4164-433

- Supports 64 wireless zones, 16 wireless keys
- All wireless detectors are fully supervised for communication integrity
- Easy sensor enroll process
- Up to 8 receivers on 1 system

Approval Listings: European CE Directives (EMC, R&TTE, LVD), FCC/IC, UL/ULC



MAXSYS Power Supply/Relay Output/Combus Repeater Module PC4204CX

- Connect up to 16 modules
- Fully supervised for AC failure, low battery and AUX failure
- 4 programmable form 'C' relays

Approval Listings: European CE Directives (EMC), INCERT (Belgium), FCC/IC, UL/ULC



MAXSYS Commercial Fire Power Supply PC4204CXCF

- Includes all the features of the PC4204CX
- Includes PC4052CR cabinet
- Built-in 16 VAC, 40 VA hardwired transformer

Approval Listings: European CE Directives (EMC), INCERT (Belgium), FCC/IC, UL listed under UL864 8th Edition only

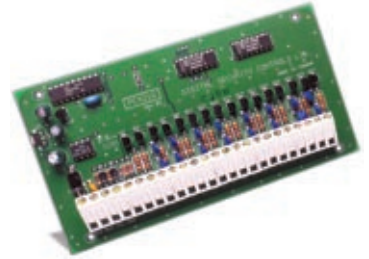


Some products are not available in all countries. Contact your local distributor for details.

MAXSYS 16 Low Current Output Module PC4216

- Provides 16 programmable outputs: rated at 50 mA @ 12 VDC
- Connect up to 9 PC4216 modules per system

Approval Listings: Not CE Listed, FCC/IC, UL/ULC



MAXSYS Data Interface Module PC4401

- Connect up to 4 modules
- Capable of performing as either a bi-directional RS-232 interface, PC-Link isolator, printer module
- Real-time zone status
- Fully programmable
- 4-wire hook-up to COMBUS

Approval Listings: European CE Directives (EMC), FCC/IC, UL/ULC



MAXSYS Telephone Interface and Automation Control Module ESCORT4580

- Turns any touchtone phone into a talking keypad
- Programmable labels: 6 words per label, 240+ word library
- Built-in X-10 interface: supports up to 32 X-10 devices, 16 schedules, 8 modes
- Available in English, Spanish and French

Approval Listings: European CE Directives (EMC, R&TTE, LVD), FCC/IC, UL/ULC



MAXSYS 32/64 Point Graphic Annunciators PC4632 & PC4664

- Egg-crate backplate for flexible LED locations
- Pre-printed point display transparency
- Clear transparencies (2) for custom graphics

PC4632: Approval Listings: Not CE Listed, FCC/IC, UL

PC4664: Approval Listings: European CE Directives (EMC), FCC/IC, UL listed under UL864 8th Edition only



Some products are not available in all countries. Contact your local distributor for details.

MAXSYS Dual-Line Dialer Module PC4701

- Dual, supervised phone line connections
- 1 2-wire Class B/Style B supervised smoke alarm zone
- 1 Class B/Style B waterflow zone
- Fire alarm and fire trouble form 'C' relays

Approval Listings: Not CE Listed, FCC, UL listed under UL864 8th Edition only



MAXSYS Dual-Zone Bell Panel PC4702BP

- Connect up to 4 modules
- Provides 2 alarm notification circuits: rated at 1.8 Amps @ 24 VDC each
- Fully supervised outputs for open, short and ground fault
- PTC protected
- Includes: PC4052CR red cabinet, 28 VAC, 180 VA hardwired transformer

Approval Listings: Not CE Listed, FCC, UL listed under UL864 8th Edition only



MAXSYS 2-Reader Access Control Module PC4820

- Connect up to 16 modules
- Multiple reader technologies
- 2 supervised lock outputs: 250 mA per output
- 64 user access levels
- 99 date schedules
- 2 access door support per module for up to total of 32 on system
- 4 holiday groups
- Arm/Disarm partitions via access control
- PC4053 beige cabinet included

Approval Listings: European CE Directives (EMC), FCC/IC, UL/ULC



Some products are not available in all countries. Contact your local distributor for details.



MAXSYS Access Control Kit MAXKIT

This affordable package is the perfect access control starter kit. It has all the essentials you need: control panel, access control module, reader and keys in one low-cost package. If needed, the system can be easily expanded.

Includes:

- 1 PC4020 control panel
- 1 PC4820 2-reader access control module
- 1 P225W26 ioProx reader
- 10 P40KEY ioProx dual-encoded proximity keys

Approval Listings: European CE Directives (EMC)



MAXSYS External Battery Charger PS4350R

- Includes PS4085 multi-rate charger module
- Includes PT1012 transformer, 12 VDC, 110 VAC, 160 VA
- Space for 60 Ah of rechargeable batteries

Approval Listings: Not CE Listed, FCC/IC, UL



Some products are not available in all countries. Contact your local distributor for details.



Introducing the NEW DLS IV

DLS IV WILL REQUIRE THE FOLLOWING APPLICATIONS TO BE INSTALLED:

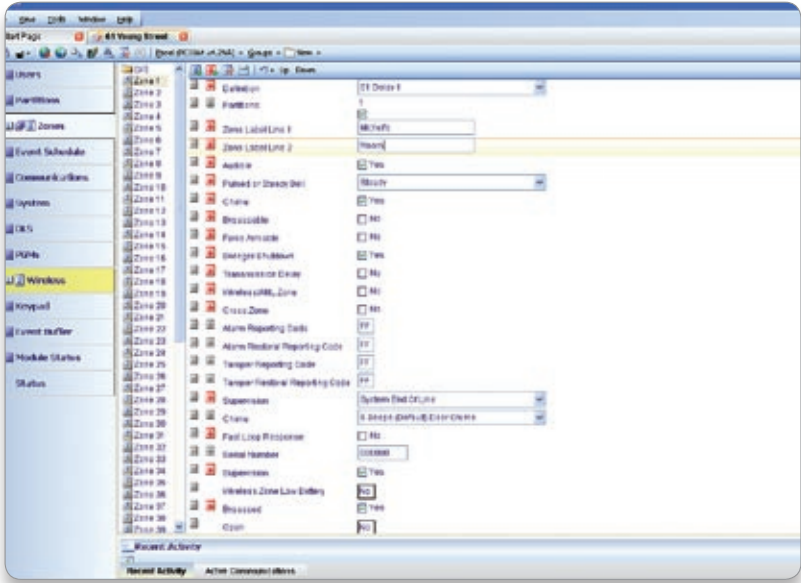
- 1. .NET Framework 3.5
- 2. SQL Server Express 2005
- 3. Visual C++ Runtime components

DLS IV is built with tomorrow in mind. It runs on Microsoft’s powerful .NET Framework 3.5 and SQL Server Express 2005 database engine. If you do not currently have these necessary components installed, the DLS IV installer will automatically download the latest version directly from Microsoft.com for you, and install them without any unnecessary intervention from you, the user.

The installation process begins with the DLS IV Updater. This updater will manage the rest of the installation process for you, and will provide updates in the future as DSC® rolls out additional driver packs and feature updates.

- Logical grouping of options
- Additional modem support
- Multiple communication paths available (PSTN, GPRS, and TCP/IP)
- Supports the Alexor suite of products
- Supports the PowerSeries 9045
- Support for the PC1616, PC1832, PC1864 version 4.2
- Live updates automatically notify user that new panels or modules have been released

With logical grouping of options, wizards, and templates DLS has never been easier to navigate and use.



Some products are not available in all countries. Contact your local distributor for details.



DLS2002 Downloading Software

DLS2002 downloading software by DSC® is much more than just a software package for remotely programming control panels. It's also a great diagnostic tool, and includes features such as auto-detect panel type and version, upgrade wizard, and error checking. DLS2002 will help streamline installations, reduce programming time and decrease service calls. It gives you the ability to make changes to a system remotely in minutes, without having to visit the site. DLS2002 will take your installation and service capabilities to the next level.

DLS2002SA SYSTEM ADMINISTRATOR SOFTWARE

The DLS2002SA System Administrator software is a perfect solution for large or multi-location business applications using the MAXSYS control panel. The software is simple to use and gives users the ability to view and change codes, access cards and schedules, as well as view system status, arm/disarm partitions, and view, sort and print the event buffer. The software can be found in the Products area of the DSC website under the password-protected software section.

Features:

- Intuitive user interface
- Automatic panel and module version detection
- Automatic panel version correction
- Automatic module version correction
- Upgrade wizard
- Error checking
- Batch programming
- System installation graphic
- Supports v4.2 and previous panels

Available accessories:

PC-Link-9

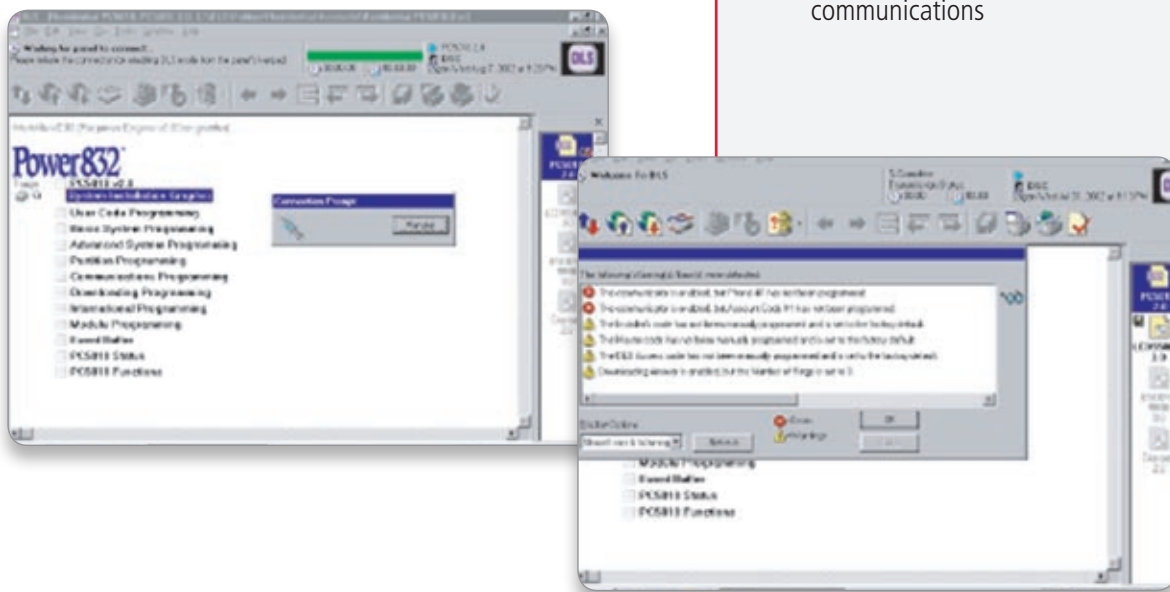
- Direct-connect cable with serial DB-9 connector

PC-LINK-SCW

- Direct-connect cable with serial DB-9 connector for PowerSeries 9045

MD-12

- Serial modem for remote panel communications



Some products are not available in all countries. Contact your local distributor for details.



433 MHz Wireless

2-Way Wireless Key WT4989

- Backlit ICON display
- Built-in buzzer for audible feedback
- Key tactile feedback
- 4 one touch function keys, programmable for up to 6 functions
- Status button indication
- Wireless key keylock
- Active alarm indication
- Water resistant
- Multi-function clip
- Nominal Battery life - 3 years
- Compatible with Alexor

Approval Listings: FCC/IC, UL/ULC, CE



1-Button Personal Panic WS4938W

- Activation via 1 large, easy-to-use button
- Full 2-second delay on panic button
- Integrated LED to indicate signal transmission
- Neck strap and multifunction belt clip included
- Reliable 433 MHz technology
- Water resistant
- Long-life lithium batteries included
- Supervised

Approval Listings: European CE Directives (EMC, R&TTE, LVD), FCC/IC, UL/ULC



2-Button Personal Panic WS4938-2W

- Activation via 2 large, easy-to-use buttons
- Full 2-second delay on panic button
- Integrated LED to indicate signal transmission
- Neck strap and multifunction belt clip included
- Reliable 433 MHz technology
- Water resistant
- Long-life lithium batteries included
- Supervised

Approval Listings: European CE Directives (EMC, R&TTE, LVD)



4-Button Wireless Key WS4939EU

- Durable, scratch-resistant buttons
- 4 programmable function keys
- Long-life lithium batteries included
- Full 3-second delay on panic alarm to reduce false alarms
- Multifunction belt clip included
- Reliable 433 MHz technology
- Optional generic rubber insert included
- Water resistant

Approval Listings: European CE Directives (EMC, R&TTE, LVD), INCERT (Belgium), NCP (Holland), IMQ (Italy) Livello 1, SBSC (Sweden) Larmklass R, EN50131-3, EN50131-6, Grade 2, Class II Environment, CERT (Tunisia), ICASA (South Africa), FCC/IC, UL/ULC



Some products are not available in all countries. Contact your local distributor for details.

Wireless Door/Window Contact WS4945W

- Built-in reed switch
- Normally closed external contact input
- 1 lithium battery included
- Reliable 433 MHz technology
- Available in brown housing
- Case and wall tamper

Approval Listings: European CE Directives (EMC, R&TTE, LVD), INCERT (Belgium), NCP (Holland), IMQ (Italy) Livello 1, SBSC (Sweden) Larmklass R, EN50131-2-6, EN50131-6, Grade 2, Class II Environment, ICASA (South Africa), FCC/IC, UL/ULC



Vanishing Contact WS4975W

- Built-in reed switch
- Wafer-thin profile
- Long-life lithium battery included
- 5/8" (16 mm) magnet gap
- Reliable 433 MHz technology
- Includes double-sided tape

Approval Listings: European CE Directives (EMC, R&TTE, LVD)



Wireless Passive Infrared Detector WS4904W/WS4904PW

- WS4904W replaces the WLS904L-433W
- WS4904PW replaces the WLS904PL-433W
- Based on the Bravo® 3D hardwire motion detector
- High-traffic shutdown
- WS4904PW features pet immunity up to 27 kg (60 lbs)
- 1 lithium battery included

Approval Listings: European CE Directives (EMC, R&TTE, LVD), INCERT (Belgium), NCP (Holland), IMQ (Italy) Livello 1, SBSC (Sweden) Larmklass R, EN50131-2-2, EN50131-6, Grade 2, Class II Environment, ICASA (South Africa), FCC/IC, UL/ULC



Wireless Pet-Immune Passive Infrared Detector WLS914-433

- Based on the Bravo®6 hardwire motion detector
- High-traffic shutdown
- Pet immunity up to 39 kg (85 lbs)
- 4 'AA' batteries included

Approval Listings: European CE Directives (EMC, R&TTE, LVD), FCC/IC, UL/ULC



Some products are not available in all countries. Contact your local distributor for details.

Wireless CO Detector WS4913

Colorless, tasteless, odorless but deadly, carbon monoxide (CO) is impossible to detect without a warning device. The WS4913 Wireless Carbon Monoxide Detector from DSC is the perfect complement to DSC's full security line-up. The WS4913 provides front-line protection against the silent threat of carbon monoxide poisoning.

- Slim-line design
- Built-in 85dB alarm at 10 ft (3 m)
- Malfunction supervision
- Low sensitivity supervision
- Electrochemical sensing technology
- Transmits RF status, low battery and tamper condition
- Hush feature
- Wall tamper
- Onboard LEDs indicate:
 - * Red – Alarm
 - * Yellow – Trouble
 - * Green – Power
- 3-5 year battery life
- End-of-Life (EOL) indicator (5 year)
- Low battery supervision
- Compatible with Alexor

Approval Listings: FCC/IC, UL/ULC



NEW

Wireless Photoelectric Smoke Detector WS4916EU

- Automatic drift compensation
- Built-in, dual-sensor heat detector with fixed heat and rate of rise (non UL listed)
- Built-in 85 dB horn
- Local test button
- Low profile design
- High/Low sensitivity reporting
- Low battery indication
- Easy-maintenance removable smoke chamber
- Non-contact sensitivity reading with handheld test meter (FSD-100)
- Long-life lithium batteries included
- EN /UL/ULC listed for residential applications

Approval Listings: European CE Directives (EMC, R&TTE, LVD, CPD), CERT (Tunisia), ICASA (South Africa), FCC/IC, UL/ULC



2-Way Wireless Indoor Siren WT4901

- Siren Output – 85dB
- Siren sounds for alarms, door chimes, entry/exit delay and troubles
- Onboard test button
- Transmits RF status, low battery and tamper condition
- Front and back tamper detection
- Nominal battery life - 2 years
- Compatible with Alexor

Approval Listings: FCC/IC, UL/ULC, CE



NEW

2-Way Wireless Outdoor Siren WT4911

- Siren Output – 105dB
- Siren sounds for alarms and squawks
- Strobe light functionality for visual indication
- Provides temperature to WT5500
- Wire-free keypad
- Local and remote test capability
- Transmits RF status, low battery and tamper condition
- Large print area for company logo
- Front and back tamper detection
- IP34 rating
- Nominal battery life - 4 years
- Strobe available in blue, red or amber
- Compatible with Alexor

Approval Listings: FCC/IC, UL/ULC, CE



NEW

Some products are not available in all countries. Contact your local distributor for details.

Wireless Flood Detector WS4985

The wireless flood detector is based on the WS4945 wireless door/window contact that is connected to a water probe through a 6 foot-wire. The product is enrolled as a flood zone detector with the following DSC® control panels: Alexor, PowerSeries 9045, PC1616, PC1832, PC1864, PC4020, and is fully supervised.

- Built-in reed switch
- Normally closed external contact input
- 1 lithium battery included
- Available in brown housing
- Case and wall tamper
- End-of-line resistor
- 4-7 year battery life
- Compatible with Alexor

Approval Listings: FCC/IC, CE



Wireless Glassbreak Detector WLS912L-433W

- Based on the Acuity® glassbreak detector
- Tamper-activated test mode: should be tested using the AFT-100 glassbreak simulator
- 2 lithium batteries included

Approval Listings: European CE Directives (EMC, R&TTE, LVD), FCC/IC, UL/ULC



Wireless Device Programmer WP-433

- Simplifies enrolling and programming of wireless devices
- Supports all DSC® door/window contacts, PIRs, glassbreak detectors and wireless keys



Some products are not available in all countries. Contact your local distributor for details.

868 MHz Wireless

1-Button Personal Panic WS8938W

- Activation via 1 large, easy-to-use button
- Full 2-second delay on panic button
- Integrated LED to indicate signal transmission
- Neck strap and multifunction belt clip included
- Reliable 868 MHz technology
- Water resistant
- Long-life lithium batteries included
- Supervised

Approval Listings: European CE Directives (EMC, R&TTE, LVD)



4-Button Wireless Key WS8939W

- Durable, scratch-resistant buttons
- 4 programmable function keys
- Long-life lithium batteries included
- Full 3-second delay on panic alarm to reduce false alarms
- Multifunction belt clip included
- Reliable 868 MHz technology
- Optional generic rubber insert included
- Water resistant

Approval Listings: European CE Directives (EMC, R&TTE, LVD)



Wireless Door/Window Contact WS8945W

- Built-in reed switch
- Normally closed external contact input
- 1 lithium battery included
- Reliable 868 MHz technology
- Available in brown housing
- Case and wall tamper

Approval Listings: European CE Directives (EMC, R&TTE, LVD)



Vanishing Contact WS8975W

- Built-in reed switch
- Wafer-thin profile
- Long-life lithium battery included
- 5/8" (16 mm) magnet gap
- Reliable 868 MHz technology
- Includes double-sided tape

Approval Listings: European CE Directives (EMC, R&TTE, LVD)



Wireless Photoelectric Smoke Detector WS8916W

- Automatic drift compensation
- Built-in, dual-sensor heat detector
- Built-in 85 dB horn
- Local test button
- Low profile design
- High/Low sensitivity reporting
- Low battery indication
- Reliable 868 MHz technology
- Easy-maintenance removable smoke chamber
- Long-life lithium batteries included
- EN/UL/ULC listed for residential applications
- Compatible with all DSC 868 MHz wireless receivers

Approval Listings: European CE Directives (EMC, R&TTE, LVD)



Some products are not available in all countries. Contact your local distributor for details.

Wireless Passive Infrared Detector WS8904W/WS8904PW

- Based on the Bravo® 3D hardwire motion detector
- High-traffic shutdown
- 1 lithium battery included
- Reliable 868 MHz technology
- WS8904PW feature pet immunity up to 27 kg (60 lbs)

Approval Listings: European CE Directives (EMC, R&TTE, LVD)



Tri-Zone Wireless Door/Window Contact WS8965W

- 3 zones in 1 (each zone has an individual serial number)
- 1 reed/magnet combination zone
- Tilt switch mode for overhead doors
- 2 normally closed external contact inputs
- Long-life lithium battery included
- 1/2" (13 mm) maximum magnet gap
- Low-battery LED indicator
- Case tamper
- Reliable 868 MHz technology
- Includes backplate

Approval Listings: European CE Directives (EMC, R&TTE, LVD)



Some products are not available in all countries. Contact your local distributor for details.

Addressable

Addressable Passive Infrared Detector AMB-300

- Based on the Bravo®3 hardwire motion detector
- Patented MLSP (Multi-Level Signal Processing)
- Interchangeable lenses: wall-to-wall lens (standard), curtain lens, pet-immune lens and corridor lens
- Built-in tamper switch

Approval Listings: European CE Directives (EMC), FCC/IC, UL/ULC



Addressable Pet-Immune Passive Infrared Detector AMB-600

- Based on the Bravo®6 hardwire motion detector
- Patented MLSP (Multi-Level Signal Processing)
- Provides pet immunity up to 39 kg (85 lbs)
- Built-in tamper switch

Approval Listings: European CE Directives (EMC), FCC/IC, UL/ULC



Addressable Ceiling-Mount Passive Infrared Detector AMB-500

- Based on the Bravo®5 hardwire motion detector
- Coverage diameter based on mounting height
- Built-in tamper switch

Approval Listings: European CE Directives (EMC), FCC/IC, UL/ULC



Addressable Glassbreak Detector AMA-100

- Based on the Acuity® hardwire glassbreak detector
- Detects all types of breaking glass: plate, laminated, safety and tempered
- Can be tested using the glassbreak simulator (AFT-100)
- Built-in tamper switch

Approval Listings: European CE Directives (EMC), FCC/IC, UL/ULC



FSB-210 Series Addressable Photoelectric Smoke Detectors FSB-210B (Without Heat Sensor) FSB-210BT (With Heat Sensor) – Fixed heat with rate of rise (non UL listed)

- Automatic drift compensation
- Easy-maintenance removable smoke chamber
- Non-contact sensitivity reading with handheld test meter (FSD-100)
- Self diagnostics
- Available in MEA only

Approval Listings: Not CE Listed, FCC/IC, UL/ULC



Some products are not available in all countries. Contact your local distributor for details.

Addressable Contact Modules

Model	Description
AMP-700	Door/Window contact with built-in reed switch
AMP-701	Door/Window contact with normally closed input
AMP-702	Fire point module with normally open, EOL resistor supervised input
AMP-704	4-zone door/window contact with normally closed, single or double EOL inputs



AMP-700: Approval Listings: European CE Directives (EMC), FCC/IC, UL/ULC
 AMP-701: Approval Listings: European CE Directives (EMC), FCC/IC, UL/ULC

AMP-702: Approval Listings: European CE Directives (EMC), FCC/IC, UL/ULC
 AMP-704: Approval Listings: Not CE Listed, FCC/IC, UL/ULC

Loop Isolator Module AML-770B

- Can be used to isolate burglary detectors from fire detectors on the same wire run

Approval Listings: European CE Directives (EMC), FCC/IC, UL/ULC



Loop Repeater/Isolator Module AMX-400

- Can be used to repeat and re-power the AML loop to allow for longer wire runs
- Requires 12 VDC power source
- Will isolate the wire run in the event of a problem
- Provides additional 170 mA

Approval Listings: European CE Directives (EMC), FCC/IC, UL/ULC



Some products are not available in all countries. Contact your local distributor for details.

Motion Detectors

Bravo® 201 PIR Motion Detectors BV-201

The Bravo 201 motion detectors feature patented Multi-Level Signal Processing (MLSP) for accurate detection of human IR energy over a broad range of temperatures.

- Exceptional catch performance at elevated temperatures
- Sensitivity adjustment to configure the detector for normal or hostile environments
- High-level static and transient protection

Bravo 201: Approval Listings: European CE Directives (EMC), UL/ULC

Model	Description	Coverage Pattern
BV-201	Form 'A' alarm contact	
BV-L1	Wall-to-Wall lens	
BV-L2	Corridor lens	
BV-L3	Curtain lens	
BV-L4	Pet Alley lens	



Bravo® 5 360° Ceiling-Mount PIR Motion Detectors

- Digital signal analysis for consistent detection throughout the coverage pattern
- Temperature compensation for improved catch performance at critical temperatures
- Patented Multi-Level Signal Processing (MLSP) for accurate detection of human IR energy over a broad range of temperatures
- Sensitivity adjustment to configure the detector for normal or hostile environments
- High-level static and transient protection
- Exceptional white light immunity
- Excellent RF immunity

PIR Only

Model	Description
BV-500	Form 'A' alarm contact
BV-501	Form 'A' alarm contact & tamper switch

BV-500: Approval Listings: European CE Directives (EMC), EN50131-2-2 Grade 2, Class II Environment, FCC/IC, UL/ULC
 BV-501: Approval Listings: European CE Directives (EMC), INCERT (Belgium), NCP (Holland), EN50131-1 Grade 2, Class II Environment, FCC/IC, UL/ULC



PIR and Glassbreak

Model	Description
BV-500GB	Form 'A' alarm contact (motion), form 'C' alarm contact (glassbreak)
BV-501GB	Form 'A' alarm contact (motion), form 'C' alarm contact (glassbreak) & tamper switch

BV-500GB: Approval Listings: European CE Directives (EMC), EN50131-1 Grade 2, Class II Environment, FCC/IC, UL/ULC
 BV-501GB: Approval Listings: European CE Directives (EMC), INCERT (Belgium), EN50131-1 Grade 2, Class II Environment, FCC/IC, UL/ULC

Some products are not available in all countries. Contact your local distributor for details.

Bravo® 6 Twin, Dual-Element, Pet-Immune PIR Motion Detectors

- Digital signal analysis for consistent detection throughout the coverage pattern
- Digital temperature compensation for improved catch performance at critical temperatures
- Patented Multi-Level Signal Processing (MLSP) for accurate detection of human IR energy over a broad range of temperatures
- 39 kg (85 lbs) pet immunity

Optional mounting brackets available: DM-W (wall-mount bracket) or DM-C (ceiling-mount bracket)

Model	Description
BV-600	Form 'A' alarm contact
BV-601	Form 'A' alarm contact & tamper switch

BV-600: Approval Listings: European CE Directives (EMC), EN50131-1 Grade 2, Class II Environment, FCC/IC, UL/ULC
 BV-601: Approval Listings: European CE Directives (EMC), INCERT (Belgium), EN50131-1 Grade 2, Class II Environment, FCC/IC, UL/ULC



Encore™ PIR Motion Detectors

Encore PIR motion detectors use a digital, microprocessor-controlled fresnel lens to deliver stable and accurate detection without sacrificing catch performance. Vertical Beam Shaping (VBS) provides pet immunity up to 27 kg (60 lbs), while a unique cover hinge allows the detector to be installed right up to the ceiling.

- Fresnel lens technology
- Digital signal analysis for consistent detection throughout the coverage pattern
- Digital temperature compensation
- Patented Multi-Level Signal Processing (MLSP)
- Vertical Beam Shaping (VBS) provides pet immunity up to 27 kg (60 lbs), available with EC301DP series
- Concealed wiring channel
- EC-BRKT swivel-mount bracket for the ultimate in detector location and installation flexibility (available separately)

Model	Description	Coverage Pattern
EC301	Form 'A' alarm contact	
EC301D	Digital, Form 'A' alarm contact & tamper switch	
EC301DP	Digital, Form 'A' alarm contact & tamper switch with pet immunity	

EC301: Approval Listings: FCC/IC, UL/ULC
 EC301D: Approval Listings: European CE Directives (EMC), EN50131-1 Grade 2, Class II Environment, FCC/IC, UL/ULC
 EC301DP: Approval Listings: European CE Directives (EMC), EN50131-1 Grade 2, Class II Environment, FCC/IC, UL/ULC



Some products are not available in all countries. Contact your local distributor for details.

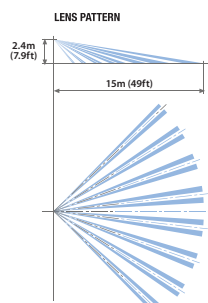

LC Series

PIR Detector with Pet Immunity LC-100-PI-6PK

The LC-100-PI (Form A contact) detector feature intelligent signal analysis for reliable detection, pet immunity up to 25 kg (55 lbs) and a slim design that complements any décor.

- Form "A" alarm contact and tamper switch
- Digital signal analysis
- Pet immunity up to 25 kg (55 lbs)
- Quad Linear Imaging Technology for sharp analysis of body dimensions and differentiation from backgrounds and pets
- Advanced ASIC-based electronics
- Compact design for residential installations
- Adjustable variable pulse count
- PIR sensitivity adjustment
- Height installation calibration free
- Available in packages of 6 (LC-100-PI-6PK)
- LC-L1ST bracket available separately

Approval Listings: European CE Directives (EMC), FCC/IC, UL/ULC

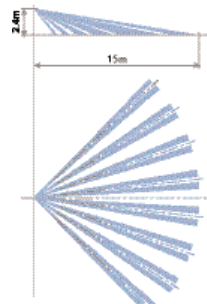

Model	Description	Coverage Pattern
LC-100-PI-6PK	Form 'A' alarm contact & tamper switch	 

PIR Detector with Camera (B&W/Color) & Pet Immunity LC-101

The LC-101 utilizes a camera to provide reliable detection and false alarm immunity. The motion detector features trouble-free installation and is ideal for those looking for a sophisticated residential solution or for commercial applications.

- Form 'A' alarm contact and tamper switch
- Digital signal analysis
- Pet immunity up to 25 kg (55 lbs)
- Quad Linear Imaging Technology for sharp analysis of body dimensions and differentiation from backgrounds and pets
- Advanced ASIC-based electronics
- Wide-range operating voltage
- High reliability, trouble-free operation
- User-friendly installation with or without swivel-mount bracket

Approval Listings: European CE Directives (EMC), FCC/IC, UL

Models Form 'A'	Description	Coverage Pattern
LC-101-CAMCLPAL	Color PAL	 
LC-101-CAMCLNTSC	Color NTSC	
LC-101-CAMBWCCIR	B&W PAL	
LC-101-CAMBWEIA	B&W PAL	

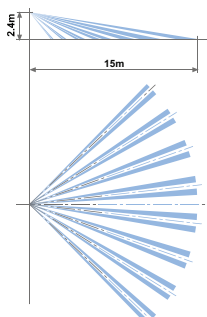
Some products are not available in all countries. Contact your local distributor for details.

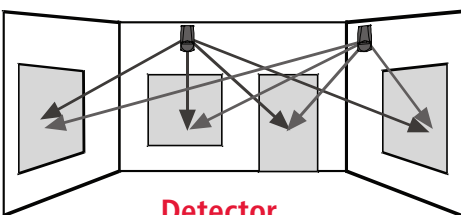
Glassbreak Detector with Pet Immunity LC-102-PIGBSS

The LC-102-PIGBSS combines proven digital PIR and glassbreak detection technology with intelligent ASIC signal analysis.


- Form 'A' alarm contact and tamper switch
- Digital signal analysis
- Slim profile design
- Features ABS plastic for shock and impact protection
- Exceptional white light immunity
- Pet immunity up to 25 kg (55 lbs)
- Quad Linear Imaging Technology for sharp analysis of body dimensions and differentiation from backgrounds and pets
- Separate PIR and glassbreak sensitivity adjustment
- 2 independent relay outputs for glassbreak and PIR alarm signals
- Advanced ASIC-based electronics
- LC-L1ST bracket available separately

Approval Listings: European CE Directives (EMC), FCC

Model	Description	Coverage Pattern
LC-102-PIGBSS	Digital PIR and Glassbreak Detector with Pet Immunity	



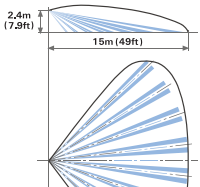
Detector Mounting



PIR Detector with Pet Immunity LC-103-PIMSK-W & LC-104-PIMW-W

The LC-103-PIMSK-W and LC-104-PIMW-W are dual-technology motion detectors that combine passive infrared and microwave detection with pet immunity. LC-103-PIMSK-W also support anti-masking. The anti-masking feature prevents intruders from defeating the detector by covering its field of view.

- Anti-masking (LC-103-PIMSK-W)
- Form "A" alarm contact and tamper switch
- Digital signal analysis
- Pet immunity up to 25 kg (55 lbs)
- Quad Linear Imaging Technology for sharp analysis of body dimensions and differentiation from backgrounds and pets
- Microwave detection based on Doppler concept
- Unique microwave motion sensor module with micro-strip patch antenna
- Advanced ASIC-based electronics Height installation calibration free 2-way PIR/ microwave sensitivity adjustment
- User-friendly installation with or without swivel-mount bracket (available separately: LC-L1ST)

Model	Description	Coverage Pattern
LC-103-PIMSK-W	PIR and Microwave Detector with Anti-Masking and Pet Immunity (10.525 GHz)	
LC-103-PIMSK-IT	PIR and Microwave Detector with Anti-Masking and Pet Immunity (9.9 GHz)	
LC-103-PIMSK-UK	PIR and Microwave Detector with Anti-Masking and Pet Immunity (10.687 GHz)	
LC-104-PIMW-W	PIR and Microwave Detector with Pet Immunity (10.525 GHz)	
LC-104-PIMW-IT	PIR and Microwave Detector with Pet Immunity (9.9 GHz)	
LC-104-PIMW-UK	PIR and Microwave Detector with Pet Immunity (10.687 GHz)	

LC-103-PIMSK-W: Approval Listings: European CE Directives (EMC, R&TTE, LVD), FCC/IC, UL/ULC
 LC-103-PIMSK-IT: Approval Listings: European CE Directives (EMC, R&TTE, LVD)
 LC-103-PIMSK-UK: Approval Listings: European CE Directives (EMC, R&TTE, LVD)
 LC-104-PIMW-W: Approval Listings: European CE Directives (EMC, R&TTE, LVD), FCC/IC, UL/ULC
 LC-104-PIMW-IT: Approval Listings: European CE Directives (EMC, R&TTE, LVD)
 LC-104-PIMW-UK: Approval Listings: European CE Directives (EMC, R&TTE, LVD)

Some products are not available in all countries. Contact your local distributor for details.

Glassbreak Detector LC-105-DGB

The LC-105-DGB glassbreak detector distinguishes the sounds of breaking glass from other common sounds found in homes and businesses.

- Form 'A' alarm contact and tamper switch
- Digital signal analysis
- Detects the sound of all types of breaking framed glass
- Phased frequency detector sensor
- Able to adjust sound sensors separately
- Ceiling- or wall-mount installation
- Slim profile design
- Features ABS plastic for shock and impact protection

Approval Listings: European CE Directives (EMC), FCC



Model	Description
LC-105-DGB	Digital Glassbreak Detector

Dual-Tech Outdoor Motion Sensor (Single PIR & Microwave) with adjustable Pet Immunity LC-151

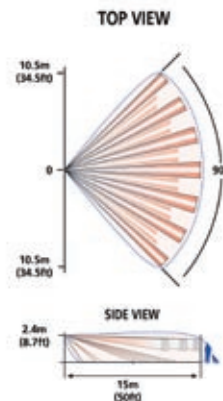
The LC-151 is a unique motion detector utilizing a single passive infra-red element and Microwave technology and is designed for outdoor use in the most severe climatic conditions. The LC-151 can also accommodate pets with the addition of optional pet immunity lenses. High reliability is achieved by combining both dual tech hardware with highly sophisticated software, greatly reducing the possibility of false alarms.

- Microwave detection based on Doppler concept
- N.O. & N.C. relays switched at the same time
- Installation height is calibration free from 1.8 m to 2.4 m (6 ft to 8 ft)
- Pet Immune up to 15 kg (33 lbs) without pet immunity lens or up to 36 kg (80 lbs) when using supplied LC-F1-15X pet immunity lens
- PIR sensitivity adjustment
- MW intensity selection
- Temperature compensation
- Microcontroller signal processing
- Front and back tamper protection
- Unique waterproof and seal plastic design
- Detection range: up to 15 m (49 ft)
- Detects human intruders walking or running
- No maintenance required
- High RFI/EMI immunity
- Protection from: direct sunlight, wind up to 30 m/sec, snow and rain, small animals, removal of top cover and removal from mounting bracket
- Rain and dust proof: IP65

Approval Listings: FCC/IC, CE

Model	Description	Coverage Pattern
-------	-------------	------------------

LC-151	Form 'C' alarm contact and tamper switches
--------	--------------------------------------------



Some products are not available in all countries. Contact your local distributor for details.

Dual-Tech Outdoor Motion Sensor (Double PIR & Microwave) with Pet Immunity LC-171

The LC-171 is a unique motion detector utilizing dual passive infra-red elements and Microwave technology and is designed for outdoor use in the most severe climatic conditions. The LC-171 can also accommodate pets.

High reliability is achieved by combining both dual tech hardware with highly sophisticated software and an adaptive coverage area, greatly reducing the possibility of false alarms. The active elements are comprised of a dual element PIR and advanced Microwave detector inside a stylish, rigid plastic body.

- Frequency: 24.125 GHz
- Microwave detection based on Doppler concept
- N.O. & N. C. Relays switched at the same time
- Pet immunity up to 35 kg (77 lbs)
- 16 levels of PIR sensitivity adjustment and 3 microwave sensitivity groups
- Temperature compensation
- Microcontroller signal processing
- Front and back tamper protection
- Audible indication of walk test and intruder detection
- Unique waterproof sealed plastic design
- Detection range: up to 18 m (59 ft)
- Detect human intruders walking or running
- No maintenance required
- High RFI/EMI immunity
- Protection from: direct sunlight, wind up to 30 m/sec, snow and rain, small animals, removal of the top cover and removal from mounting bracket
- Rain and dust proof: IP65

Approval Listings: FCC/IC, CE

Model	Description	Coverage Pattern
LC-171	Form 'C' alarm contact and tamper switches	



Some products are not available in all countries. Contact your local distributor for details.

Glassbreak Detectors

Acuity® Glassbreak Detectors

- Omni-directional microphone
- Advanced microprocessor-based glassbreak sensor
- High-level static and transient protection
- High RF immunity with SMD construction
- White noise rejection mechanism
- Installer test mode for glassbreak sensor (AFT-100 tester required)
- Alarm memory (latching LED) for glassbreak sensor
- MOV transient/static protection
- Jumper selectable sensitivity range

Wall-Mount

Model	Description
AC-100	Form 'A' alarm contact
AC-101	Form 'A' alarm contact & tamper switch
AC-102	Form 'C' alarm contact & tamper switch

AC-100: Approval Listings: European CE Directives (EMC), EN50131-1 Grade 2, Class II Environment, FCC/IC, UL/ULC
 AC-101: Approval Listings: European CE Directives (EMC), INCERT (Belgium), NCP (Holland), EN50131-1 Grade 2, Class II Environment, FCC/IC, UL/ULC
 AC-102: Approval Listings: European CE Directives (EMC), EN50131-1 Grade 2, Class II Environment, FCC/IC, UL/ULC



Ceiling Mount

Model	Description
AC-500	Form 'A' alarm contact

AC-500: Approval Listings: European CE Directives (EMC), EN50131-1 Grade 2, Class II Environment, FCC/IC, UL/ULC

Glassbreak Detector DG-50BU

- Form 'A' alarm contact and tamper contact
- Clean, modern design blends with any décor
- Advanced signal discrimination for accurate identification of breaking glass
- Resistant to blinding by background noises
- Sensitivity adjustment potentiometer
- Anti-shock design prevents false alarms from mechanical shock
- MOV static/lighting protection
- SMD construction and integral ground shield for high RF immunity

Approval Listings: FCC/IC



Accessories: Glassbreak Simulator AFT-100

The AFT-100 glassbreak simulator provides the most reliable and accurate indication of the correct mounting location for the detector. Do not install the detector beyond the maximum recommended range, even if the glassbreak simulator reports additional range. Future changes in room acoustics could reduce any additional range.



Shock Sensor SS-102

- Unique bi-colored LED to indicate minor or major attacks
- Anti-tamper protection
- Moisture-resistant electronics module
- High immunity to low-frequency false alarms and radio interference
- Sensitivity adjustment
- Compatible with all makes of control panels
- SS-102 is able to monitor for minor vibrations (and count them to a preset limit) and for major attacks at the same time

Approval Listings: European CE Directives (EMC), FCC/IC



Some products are not available in all countries. Contact your local distributor for details.



Wired Photoelectric Smoke Detectors FSA-210/410

- Automatic drift compensation
- Built-in, dual-sensor heat detector (option)
- Built-in 85 dB horn (option)
- Easy-maintenance removable smoke chamber
- Interconnectable using PRM-2W/4W polarity reversal modules
- Non-contact sensitivity reading with handheld test meter (FSD-100)
- Low profile design
- Local test button

MEA Model 'B': Approval Listings: European CE Directives (EMC, R&TTE, LVD, CPD), FCC, UL
 European Model 'C': Approval Listings: European CE Directives (EMC, R&TTE, LVD, CPD)

FSA-210

Model	Description
FSA-210(x)*	2-wire photoelectric smoke detector
FSA-210(x)T*	2-wire photoelectric smoke detector w/ heat detector
FSA-210(x)ST*	2-wire photoelectric smoke detector w/integral sounder & heat detector

FSA-410

Model	Description
FSA-410(x)*	4-wire photoelectric smoke detector
FSA-410(x)R*	4-wire photoelectric smoke detector w/ aux. relay & heat detector
FSA-410(x)S*	4-wire photoelectric smoke detector w/ integral sounder
FSA-410(x)ST*	4-wire photoelectric smoke detector w/ integral sounder & heat detector
FSA-410(x)RST*	4-wire smoke detector w/integral sounder, aux, relay & heat detector
FSA-410(x)RT*	4-wire smoke detector w/aux, relay & heat detector
FSA-410(x)T*	4-wire smoke detector w/heat detector



*Legend (x) = 'B' MEA model number | (x) = 'C' European model number

Accessories

PRM-2W

Polarity reversal module, PCB for panel mounting (2-wire interconnect)

PRM-2WC

Polarity reversal module in plastic case (2-wire interconnect)

PRM-4W

Polarity reversal module, PCB for panel mounting (4-wire interconnect)

PRM-4WC

Polarity reversal module in plastic case (4-wire interconnect)

RM-2

End-of-line power supervisory relay (4-wire detectors only)

PRM-2W: Approval Listings: Not CE Listed, FCC/IC, UL/ULC
 PRM-4W: Approval Listings: Not CE Listed, FCC/IC, UL/ULC
 RM-2: Approval Listings: Not CE Listed, UL



Handheld Test Meter FSD-100

Precise and quick sensitivity testing is easily accomplished with the non-contact FSD-100 handheld test meter. Powered by a standard 9V alkaline battery and small enough to fit inside a shirt pocket, the FSD-100 holds 500 readings that can be downloaded to any computer. To initiate a reading, a technician simply holds the FSD-100 near a DSC smoke detector and activates the detector's test button.

Approval Listings: European CE Directives (EMC), FCC/IC, UL/ULC

Some products are not available in all countries. Contact your local distributor for details.



Transmitters

GSM/GPRS Wireless Alarm Communicator GS2065

- Back up and primary GSM/GPRS alarm communication
- Panel remote uploading/downloading support via GSM/GPRS
- Advanced remote and local programming via DSC DLS IV
- Supervision heartbeats via GSM/GPRS
- 128-bit AES encryption via GSM/GPRS
- Full event reporting
- Installer Code
- SIA format
- PC-Link connection
- Signal strength and trouble display
- Carrier Network Lock and SIM Lock*
- Quad-Band: 850 MHz, 1900 MHz, 900 MHz and 1800 MHz
- Compatible with Alexor Wireless Panel
- Compatible with Sur-Gard® System I/II/III monitoring station receivers

Approvals: CE

*Both features are pre-programmed features and available upon request of specific carrier networks.



Internet and GSM/GPRS Dual-path Alarm Communicator TL265GS

- Fully redundant Internet and GSM/GPRS dual-path alarm communication
- Integrated call routing
- Panel remote uploading/downloading support via GSM/GPRS and Internet
- Advanced remote and local programming via DSC DLS IV
- Supervision heartbeats via GSM/GPRS and Internet
- 128-bit AES encryption via GSM/GPRS and Internet
- Full event reporting
- Installer Code
- SIA format
- PC-Link connection
- Signal strength and trouble display
- Carrier Network Lock and SIM Lock*
- Quad-Band: 850 MHz, 1900 MHz, 900 MHz and 1800 MHz
- Compatible with Alexor Wireless Panel
- Compatible with Sur-Gard® System I/II/III monitoring station receivers

Approvals: CE

*Both features are pre-programmed features and available upon request of specific carrier networks.



GSM/GPRS Wireless Alarm Communicator GS2060

- Back up and primary GSM/GPRS alarm communication
- Panel remote uploading/downloading support via GSM/GPRS
- Advanced remote and local programming via DSC DLS IV
- Supervision heartbeats via GSM/GPRS
- 128-bit AES encryption via GSM/GPRS
- Full event reporting
- Installer Code
- SIA format
- PC-Link connection
- Signal strength and trouble display
- Carrier Network Lock and SIM Lock*
- Quad-Band: 850 MHz, 1900 MHz, 900 MHz and 1800 MHz
- Compatible with PC1864/1832/1616 control panels (version 4.1 and higher)
- Compatible with Sur-Gard® System I/II/III monitoring station receivers

Approvals: CE

*Both features are pre-programmed features and available upon request of specific carrier networks.



Internet and GSM/GPRS Dual-path Alarm Communicator TL260GS

- Fully redundant Internet and GSM/GPRS dual-path alarm communication
- Integrated call routing
- Panel remote uploading/downloading support via GSM/GPRS and Internet
- Advanced remote and local programming via DSC DLS IV
- Supervision heartbeats via GSM/GPRS and Internet
- 128-bit AES encryption via GSM/GPRS and Internet
- Full event reporting
- Installer Code
- SIA format
- PC-Link connection
- Signal strength and trouble display
- Carrier Network Lock and SIM Lock*
- Quad-Band: 850 MHz, 1900 MHz, 900 MHz and 1800 MHz
- Compatible with PC1864/1832/1616 control panels (version 4.1 and higher)
- Compatible with Sur-Gard® System I/II/III monitoring station receivers

Approvals: CE

*Both features are pre-programmed features and available upon request of specific carrier networks.



Some products are not available in all countries. Contact your local distributor for details.

GSM/GPRS Universal Wireless Alarm Communicator GS3100

- Compatible with most control panels that communicate using the Contact ID format
- Back-up and primary GSM/GPRS alarm communication
- Uses GPRS data channel for high-speed, reliable and low-cost communications to Sur-Gard System I, System II and III receiver
- Antenna with magnetic base and 2 m cable
- 3 open collector outputs, 4 phone numbers programmable for Contact ID Dialer on GPRS
- Up to 100 telephone numbers (max. 16 digits) programmable for the remote activation of the OC output
- Low current draw allows powering the unit from most alarm panels
- PC-programmable options
- Quad-band: 850 MHz, 1900 MHz, 900 MHz and 1800 MHz

Approval Listings: CE



GSM/GPRS Universal Wireless Alarm Communicator GS3055-IGW

- Compatible with most control panels that communicate using the Contact ID format
- Full event reporting
- Primary or backup alarm communicator
- Uses GPRS data channel for high-speed, reliable and low-cost communications to Sur-Gard System I, System II and III receiver
- 4 on-board programmable inputs
- 4 programmable outputs (open collector)
- SMS dialer feature allows 13 preset text messages to be sent upon alarm events
- Up to 8 programmable phone numbers for SMS dialer
- Up to 95 phone numbers to control the programmable outputs
- SMS message remote programming
- Simple programming via PC software
- 4 status LEDs to indicate signal strength and operation
- Dual-band GSM (900 MHz/1800 MHz)

Approval Listings: European CE Directives (EMC, R&TTE, LVD)



Some products are not available in all countries. Contact your local distributor for details.

T-Link Universal IP Alarm Communicator TL300CE

- Compatible with most control panels that communicate using the Contact ID format
- Instant, always-on IP communication
- Works over local LAN/WAN network or the Internet
- 128-bit AES encryption (NIST approved)
- Supports DHCP (dynamic IP addresses)
- Low network bandwidth requirements
- Compatible with 10/100BaseT networks
- Reports events to 2 different receiver IP addresses
- Polling and hardware substitution protection
- 4 on-board programmable zone inputs and 2 programmable voltage outputs as standalone module
- Programmable through the PK5500 LCD keypad or T-Link Console software
- Software upgrades via network
- Compatible with Sur-Gard System I/II/III monitoring station receivers

Approval Listings: European CE Directives (EMC)



T-Link Internet/Intranet Alarm Communicator TL250CE

- Supports PowerSeries (version 3.24 and higher) and MAXSYS (version 3.31 and higher) control panels
- Instant, always-on IP communication
- Works over local LAN/WAN network or the Internet
- 128-bit AES encryption (NIST approved)
- Supports DHCP (dynamic IP addresses)
- Low network bandwidth requirements
- Compatible with 10/100BaseT networks
- Reports events to 2 different receiver IP addresses
- Polling and hardware substitution protection
- 4 on-board programmable inputs and 2 programmable voltage outputs as standalone module
- Programmable through the PK5500 LCD keypad or T-Link Console software
- Software upgrades via network
- Download control panel via Internet with DLS software
- Compatible with Sur-Gard System I/II/III monitoring station receivers

Approval Listings: European CE Directives (EMC)



T-Link Residential IP Alarm Communicator TL150

- Supports PowerSeries (version 3.24 and higher) control panels
- Instant, always-on IP communication
- Works over local LAN/WAN network or the Internet
- 128-bit AES encryption
- Supports DHCP (dynamic IP addresses)
- Low network bandwidth usage
- Compatible with 10/100BaseT networks
- Supervised as a KEYBUS module (supervision of both KEYBUS and network connections)
- T-Link programming (IP address and account number) through a web-browser interface
- Homeowners can arm/disarm security system and view zone status through a webpage on their home computer
- Compatible with Sur-Gard System I/II/III monitoring station receivers

Approval Listings: European CE Directives (EMC), FCC



Some products are not available in all countries. Contact your local distributor for details.



Sur-Gard Monitoring Station Receivers & Line Card Modules

Dual Phone Line With Optional IP Receiver SG-SYSTEM I

- Multi-format receiver
- Integrated scheduled receiver line card testing
- Up to 63 different profiles and up to eight different handshakes per profile
- 500-event memory buffer on each individual line card
- Patented ANI and DNIS reception, Automatic Handshake Selection (AHS), Caller ID capability and virtual configurations
- Continuous verification of computer/receiver links
- One parallel, one serial, one USB, one TCP/IP printer port available
- One serial, one TCP/IP activation port available
- One USB, one TCP/IP console port available
- Non-volatile RAM for programming and event buffer
- "Flash" download software upgrades
- DSP technology
- Remote acknowledgement and sounder capability
- Optional support for 512 IP Communicators
- Rack mount in standard 19-inch rack with the SG-SII-RMK
- 128 Bit AES encryption over IP
- UL standard & encrypted line security
- CE approved



Single-Line IP Receiver SG-SYSTEM II

- Value-priced remote monitoring solution ideal for lower-volume applications
- Supports up to 512 supervised and up to 1,536 IP communicator accounts (TL150, TL250, TL300, TL260GS, TL265GS, GS3055-IGW, GS3060, GS2060, GS2065)
- Desktop or rack mountable with the use of a rack kit
- TCP/IP, USB, serial outputs to automation software
- 128-bit AES encryption
- Works over local LAN/WAN network as well as the Internet
- Polling and hardware substitution protection
- Compatible with 10/100BaseT networks
- Fully programmable via SG-System II Console software
- Menu-driven, 40-character, 2-line LCD display with blue backlighting provides instruction when in manual mode
- 4 buttons for manual programming and acknowledgement of alarm signals when in manual mode
- Universal power supply compatible with 110/220 50 Hz/60 Hz
- Onboard flash memory and DSP for future software upgrades and enhancements
- CE approved



Some products are not available in all countries. Contact your local distributor for details.



Sur-Gard Monitoring Station Receivers & Line Card Modules

Virtual Receiver SG-SYSTEM III

- Up to 24 line cards per System III receiver SG-DRL3IP or SG-DRL3 STD
- Fully "hot-swappable" modules
- Fully programmable via SG-System III Console software
- Eliminates fixed-line hunt groups
- Integrated scheduled receiver line card testing
- Blocks unwanted communications
- Requires less physical space
- Upgradeable flash memory
- Automation output over TCP/IP or RS-232
- CE approved



POTS Line Card For SYSTEM III SG-DRL3STD

- Maximizes use of all line cards (SG-DRL3STD)
- Patented ANI and DNIS reception
- Patented Caller ID
- Patented Automatic Handshake Selection (AHS)
- Reduces phone charges
- Advanced 2-way audio integration
- CE approved



Network Line Card For SYSTEM III SG-DRL3-IP

- Each line card supports up to 512 supervised and up to 1,536 total
- IP communicator accounts (TL150, TL250, TL300, TL260GS, TL265GS, GS3055-IGW, GS3060, GS2060, GS2065)
- Instant, always-on IP communication
- Works over local LAN/WAN network as well as the Internet
- 128-bit AES encryption
- Polling and hardware substitution protection
- Compatible with 10/100BaseT networks
- High-security network monitoring
- UL standard & encrypted line security
- CE approved



Some products are not available in all countries. Contact your local distributor for details.



DSC Services & Support

DSC understands that security dealers everywhere need more than just great products, they deserve exceptional service and support as well. That is why we have committed resources to ensure we're in a position to help our customers as needed.

DSC Customer Help Center

A dedicated team of Technical Support and Inside Sales Representatives stands ready to provide security dealers with valuable expertise and in-depth product knowledge. The Customer Help Center offers extended hours of services, access to all departments within DSC, and multilingual support in 3 languages. The Customer Help Center is ready to provide you with the exceptional service, support and value you have come to expect from DSC.

For technical support, call +1-905-760-3000 or e-mail us at tech@dsc.com. For general product information or the location of the nearest DSC distributor, please call +1-905-760-3000 or e-mail us at info@dsc.com.

DSC Marketplace.com

The DSC Marketplace.com is intended to be your primary method for ordering product-specific literature, associated marketing support materials and promotional items. To gain access to this great service, please visit www.dscmarketplace.com and complete the short registration form. Upon completion, your account will be activated within 48 hours allowing you to start browsing the site at your convenience. To ensure proper materials are being ordered, you can view thumbnail pictures as well as download PDF files of all items. For more information or comments, please visit www.dscmarketplace.com.

www.dsc.com

The DSC website is an intuitive, easy-to-navigate resource that provides security professionals with access to a wealth of product-specific information. Password-protected areas are tailored specifically for security dealers and offer the latest news on DSC products, corresponding events and launches, the latest technical support materials and diagnostic tools, and helpful industry and association links. Visit www.dsc.com to learn more.

Downloadable PDF versions of all DSC security products, sales and specification sheets, end-user manuals, architect and engineer specifications, plus the complete DSC product catalog can be found on the website.



Some products are not available in all countries. Contact your local distributor for details.



YOUR MOST VALUABLE TOOL MAY BE ON THE WEB

The new DSC.com website



The all new DSC.com website has been rebuilt from the foundation up with special attention focused toward intuitive navigation, faster download speed and greater access to technical resources.

Now with a more robust technical library, you can quickly and easily find user and installer manuals, software, product descriptions, photography, application notes, solutions and certifications.

DSC.com, your complete online resource for DSC product information.

LAUNCHING APRIL 2009

Some products are not available in all countries. Contact your local distributor for details.



DSC[®]

For more information on the products featured here
or on any other DSC products please call:

+1-905-760-3000

E-mail: info@dsc.com

or contact your DSC Account Representative.

Please visit us at www.dsc.com